



The IMA Quarterly

April 18, 2006

In This Issue:

Server and O/S Upgrades	...1
Software: New releases	...1
Software: Premium modules	...2
Software: In development	...3
Software: On hold	...3
Calendar of Events	...4

Editor: Georgeanne Biancarosa

➤ Urgent Notices

v15.0 is now obsolete:



IMA will no longer support systems that are not at v15.1. When our support is needed at the remaining 3 agencies that have not yet updated, they will first have to schedule and complete the update to v15.1 before IMA will address any problem.

Server upgrade

Some of you are still utilizing servers on which the original manufacturer's warranty has expired. These servers are also using the SCO Operating System which is no longer optimal for the IMA application.

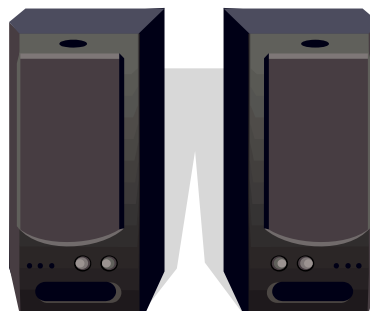
Now is the time to resolve both issues by getting new hardware. When you do that, IMA will also upgrade the software to the new Linux Operating System.

The IMA software runs better on Linux and is making use of many new capabilities that are not available on the SCO system. IMA will stop offering new releases on the SCO platform effective 12/31/2006.

If you have not already done so, please contact us as soon as possible for an individual assessment and proposal for this migration.

Disaster Recovery

The ultimate backup system for secure recovery from the loss of a server is to maintain an off-site mirrored server that is set up to automatically copy all files from the production system. This is the "gold standard" of backups, but it is typically very expensive and the set up is technically challenging.



We are happy to inform you that due to our utilization of the Linux O/S and inexpensive Dell

servers, we recently succeeded in setting up just such a system at four IMA customer sites at a reasonable cost. Once setup, no special technical expertise is required to maintain the backups.

If this is of interest to your agency, please contact IMA for more details.

➤ **Module upgrades:**

v15.1 has just gotten even better! We've incorporated many more new features under the same release number. Please check to make sure that your site has the latest version which includes all of the following new features.

1. HIPAA File Manager

Your Medicaid remittance download now includes a changed and expanded Supplementary File for each cycle response. To help you benefit from those changes, IMA has added new features within the HIPAA File Manager to report and act on this new data from CSC.

Earlier this year, information related to previously Pended claims was added to the Supplementary File. IMA now gives you the tools to report on and update these claims as Pended within the HIPAA FM.

The MD Supplementary File now also includes denial information. This new denial information uses the pre-

HIPAA proprietary codes in addition to the generic denial codes of the remittance transaction. These pre-HIPAA codes are the original codes that many of you are familiar with. Similarly, IMA has added a feature within the HIPAA FM to report on this newly added denial data.

The IMA HIPAA File Manager is now able to identify, read, report and act on each of these transactions within the supplementary files. Once downloaded into the HIPAA FM, the system identifies whether the Supplement contains Pends, Denials or Both and facilitates your interaction with each.



2. Revenue Reports

The available data grid for this family of customizable revenue reports has been enhanced to include the ability to capture the Agency Standard Fee. This is useful for financial reports that need to account for gross revenue including allowances.

3. Cash Receipts Report

We've added a new report option to track the application of receipts by program and date, in addition to the total receipt amounts and dates.

4. OASAS new file exports

For OASAS Admission and Discharge reports and the associated electronic submissions, IMA added the ability to generate separate data files for submission to CDS for PAS44, PAS45 and PAS46 data.

5. OASAS Monthly PRU

IMA added the ability to capture and report Group Sessions and Individual Visits in addition to the other service categories on the Monthly PRU/PAS48.

6. Case Management

This integrated Case Management module has been upgraded with many enhancements plus a brand new team management facility. Staff may now be reassigned as needed without requiring corresponding changes in the client's program enrollment.

➤ New premium modules:

1. Productivity Report

IMA has created a new Productivity Report to capture actual staff productivity as compared to an expected number of service units per day. The performance numbers in this type of report are not normally accurate because the corresponding number of days and hours worked by each staff person is typically missing as this data is generally not available or known to the system. The report for any particular week

or month would therefore not be generally reliable. In order to get accurate numbers one has to either maintain an accurate staff attendance record on the IMA system or massage the reports by hand with the manually available attendance information.

IMA's new report has achieved a breakthrough on this problem. The number of days worked are automatically extracted from the service data. Any working day that does not have any services posted from a particular staff member is automatically subtracted from their number of days worked.

We got terrific results at the agency where we first tested this report. We were able to produce retroactively very accurate productivity reports with very little set up.



2. Tracking PNote printing

Progress Notes now has a new feature to assist the Medical Records personnel in tracking Progress Notes that have and have not yet been printed for the Chart.

3. Depression Index tracking

A fully configured HPQ-9 Depression Inventory is now available within the IMA Forms Module. Features include the

nine question inventory, a self-tabulated score and score history as the instrument is administered over time. The HPQ-9 is available to all IMA Desktop customers, even those who have not licensed the IMA Forms module.

4. Medicaid Enhanced Rate for Children's Services

IMA has a new set of tools for eligible agencies to identify, post and bill for the services that qualify for the new MD Enhanced Children's Rate. Several agencies are already using this new module to bill for the enhanced services and are receiving payment.

5. Medicaid PROS Module

The new PROS module includes client registration, client data collection, MEVS status, service recording and monthly billing. This module will support various service data collection methods including client ID card swiping, group attendance sheets, entry of progress notes, direct data entry and through a new group services recording module.

6. MC "Incident to" Billing

IMA has developed a new tool to allow for Medicare "Incident to" billing when the service provider is not in the Medicare network. This new tool will detect these cases and substitute the available, assigned Medicare network physician under whose supervision the service is rendered.

7. Treatment Plans



Three major new features were added to the IMA Treatment Plan module as follows:

- a. Support for Wiley datasets. The Wiley Treatment Planner books are now also available for populating the Goals and Objectives sections of the IMA Treatment Plans.
- b. Support for IMA-Write within the narrative/memo section of the IMA Treatment Plan. Individually configured IMA-Write control spreadsheets may be associated with each/any of the memos defined.
- c. Support for utilizing agency defined Microsoft (MS) Word documents to replace all IMA Treatment Plan components except for the header and the electronic signature blocks. In effect an agency will now be able to incorporate their own MS Word documents and data fill-ins into IMA. These agency-defined documents will be combined with the IMA header and signature blocks through which the plan can be automatically tracked by the system. This development is still a work in progress but we expect to release these new features this summer.

Please email georgeanne@imasys.com if you are interested in additional information on any of these new modules or options.

➤ Software: in development

Day Hab Billing Module

IMA is now developing a set of tools to monitor and bill Day Hab services. These new tools will address and comply with all of the new OMR/DD Day Hab billing regulations.

DD DayHab NOD Tracking

In addition to the billing module described above, IMA is also developing a tracking mechanism for the Notice Of Determination and Notice Of Termination letters received for each client.

Fully Customized TX Plan

See "c" under item 7 above for the work in progress on this development.

➤ Software: development on hold

Medicaid billing for Risperdal Consta injections

IMA's development of the new billing and tracking software in support of billing Medicaid for Risperdal Consta is on hold in response to MD's difficulty in processing these claims electronically.

Q2 2006: Calendar of Events

**Each call will be 1:00 PM.

April

26 - HIPAA FM Features

May

11 - Ad Hoc Reports: Report Layouts

17 - Writing PNotes: the Basics

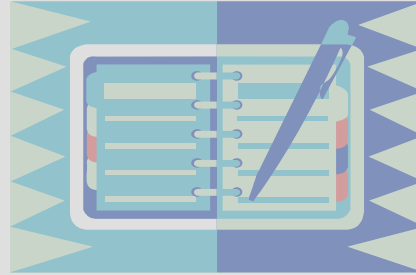
25 - Ad Hoc Reports: Queries

June

8 - Manual Remittance and Reports

14 - Getting Started w/TX Plans

23 - Remittances Batches and Reports



IMA Office Closures

April 13-14 - Passover

April 19-20 - Passover

May 29 - Memorial Day

June 2 - Shavuoth

All General Conference Calls are an included benefit of your Monthly Service Agreements with IMA. The only charges for these calls will be for the fees associated with the call center and the website host. In cases where there is no Contract in effect, the elapsed time will also be billed.

Webinar Abstracts

HIPAA File Manager Features:

Use the HIPAA File Manager to identify, read and process all of the files available for download from your EDI receivers. See the new Medicaid Pending and Denial reports from the new MD Supplementary File.

Writing Progress Notes – the Basics:

See how easy it is to use the Desktop to write Progress Notes. Use the calendar to write notes for scheduled sessions with individual clients and/or client groups. You'll also see how your agency can use the Wiley data within Progress Notes.

Ad hoc Reports: Layouts and Queries:

Learn how to create ad hoc report layouts that include the specific data elements that you want to see either on paper or within CSV output. Then learn how to run dB queries for paper reports and CSV output using your own agency-specific report layouts.

Remittance: Manual, Electronic and Reports:

Learn how to data enter your EOB data from private insurances w/in Manual Remittances. Learn how to read and post EOB data that comes into your agency electronically. Learn about the Desktop Remittance and Exception Reports.

Getting started with TX Plans:

Learn what information IMA needs from you in order to configure TX Plans for your use. Learn what choices your agency has in the development of the definitions library or in using Wiley data.

NOTE:

IMA will cancel any webinar without advance notice if there is not sufficient registration to support the fair and economic distribution of all connection charges.